

# PM 6



truck mounted cranes



## TECHNICAL DATA

PM6 series can be used for different applications, being designed to handle any type of goods precisely and fast. It can be installed onto medium-sized trucks. All PM6 series models are standard fitted with manual controls. The overload protection device ensures safe operations in any operating condition. Stability system Interlock of type 1 and 2 can also be fitted on all crane's configurations. Available up to 4 hydraulic extensions with a maximum outreach of 9.65m horizontally and 12.60 m vertically.

## STANDARD CONFIGURATION

SLEWING BY RACK

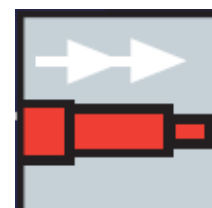
SAFETY KIT FOR OUTRIGGERS

MANUAL PULL-OUT  
OUTRIGGER BOOMS

HYDRAULIC MOMENT CONTROL  
DEVICE

SEQUENTIAL EXTENSION  
BOOMS' OUTPUT

PROPORTIONAL HYDRAULIC  
CONTROL VALVE BLOCK NOT  
COMPENSATED



# PM 6



truck mounted cranes

## OPTIONAL

OIL COOLER

OIL TANK

ACTIVATION

LMU DEVICE:  
CONTROL SYSTEM FOR  
MANUAL EXTENSION

SLEWING LIMITER LOCKING  
DEVICE  
ELECTRONIC/HYDRAULIC

## EQUIPMENTS SUMMARY

Equipments	Standard	Option
Slewing by rack	<input type="radio"/>	
Manual pull-out outrigger booms	<input type="radio"/>	
Manual flip-up outrigger		<input type="radio"/>
Sequential extension booms' output	<input type="radio"/>	
Oil cooler		<input type="radio"/>
Proportional hydraulic control valve block not compensated	<input type="radio"/>	
Radio Remote Control Basic		<input type="radio"/>
Stability Power System*		<input type="radio"/>
Hose reels		<input type="radio"/>
Slewing limiter locking device electronic/hydraulic		<input type="radio"/>
Safety Kit for outriggers*	<input type="radio"/>	
4 metres alarm sensor with control panel in cab *		<input type="radio"/>
Ball-joint outrigger plates *		<input type="radio"/>
Hydraulic moment control device *		<input type="radio"/>
LMU Device: control system for manual extensions		<input type="radio"/>
Oil tank		<input type="radio"/>

\*compulsory for CE area

## CERTIFICATION



In accordance to the  
EU safety standards



3 years of warranty  
on the structural  
parts



Quality Certificate  
UNI EN ISO  
9001:2008



In accordance to  
H1-B3 standard

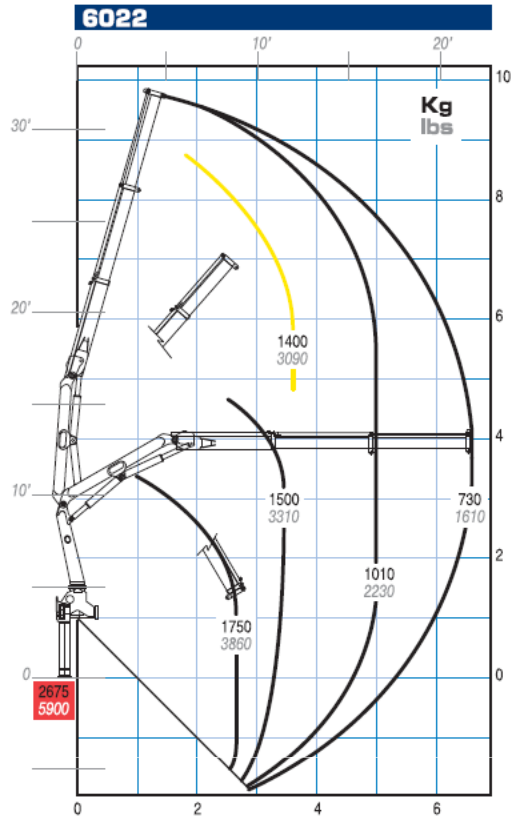


Certified painting  
system

# PM 6



truck mounted cranes

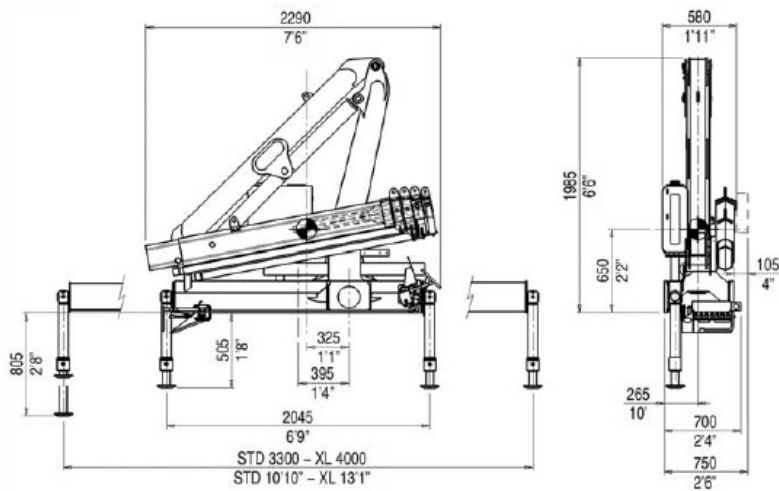


- Max. capacity from horizontal to vertical
- Max. nominal capacity with fixed hook

## DIMENSIONS

Standard Crane

mm  
ft



# PM 6



truck mounted cranes

## TECHNICAL INFORMATION PM 6022

<b>Maximum lifting moment</b>	<b>tm 5,3 ft lbs 38180</b>
<b>Max. hydraulic reach</b>	
horizontal	m 6,80 ft 22'4"
Vertical	m 9,70 ft 31'10"
<b>Max. reach with manual extensions</b>	
horizontal	m 11,00 ft 36'1"
Vertical	m 13,85 ft 45'5"
<b>Hydraulic system</b>	
recommended oil flow	l/min 20 gals/min 5
rated pressure	Mpa 27,5 Psi 3990
tank capacity	l 64 Gals 17
<b>Slewing system</b>	
slewing angle	390°
slewing moment	kNm 7,5 ft lbs 5530
max. working heel	%(°) 8,7(5)
<b>Standard crane weight</b>	
empty oil tank	Kg 775 lbs 1710

Technical data can be revised without prior notice.

## TRUCKING CRANE COMBINATION

PTT/GVW	6	2STD	
6,5 TON	4		2 outriggers STD
7,5 TON	2XL		
8 TON	2STD		
10 TON	2STD	2 XL	2 outriggers XL
12 TON	2STD		
13,5 TON	2STD		
15 TON	2STD		
18 TON	2STD	4	4 outriggers
19 TON	2STD		
26 TON	2STD		
32 TON	2STD		

PTT: G.V.W.

## ACCESSORIES\*



Fixed pump



PTO



Clamshell Buckets



Pallet forks



Operator  
Baskets and  
Self-Levelling  
Platforms



Hydraulic Rotors



Log Grabs



Supplementary Outrigger



Hydraulic  
Grapples

\*The installation is to be verify in relation to crane and truck configuration.